

# BMS400600

## Force Platform

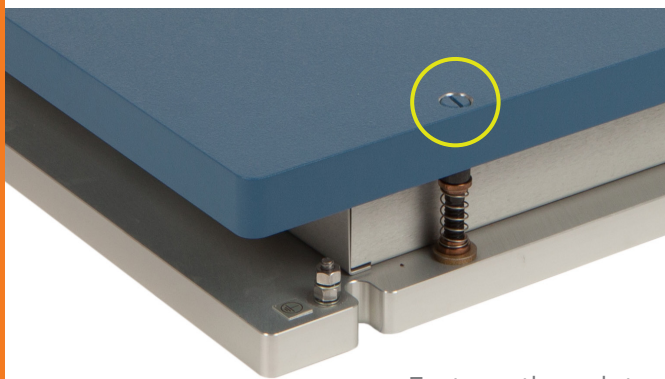
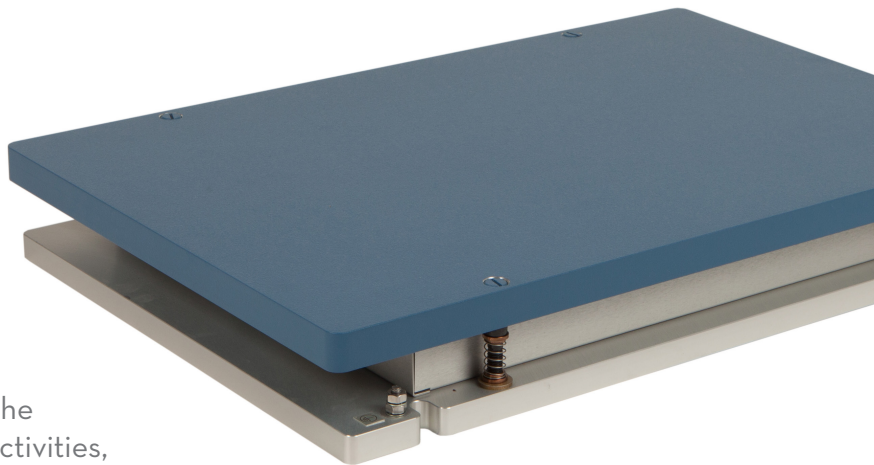
OPTIMA™ Biomechanics Measurement Series (BMS)

### System Components:

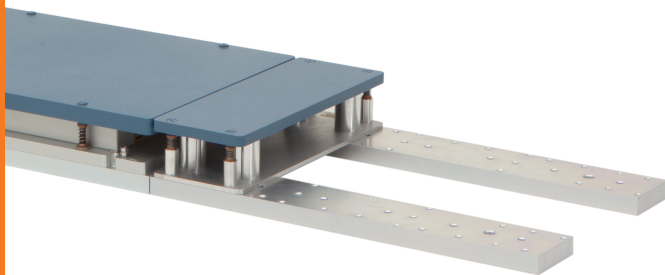
Force plate, Optima external amplifier, 9m (30ft) transducer cable, and mounting kit

As our most popular and versatile force plate, the BMS400600 can be used for a wide range of activities, including gait, balance, and sports applications.

The BMS400600 is equipped with through-top mounting access holes and features AMTI's advanced **Optima Technology**. It offers a 2:3 width-to-length ratio that is well-suited to accommodate various stride lengths in human gait analysis.



Features through-top mounting access



**Modular Rail System (MRS) and Filler Plates** enable easy reconfiguration of force plates and future lab growth

### BMS400600 SPECIFICATIONS

Dimensions (W x L x H)	400 x 600 x 82.5 mm (15.75" x 23.6" x 3.25")
Available Models	Standard or High Frequency (HF)
Weight (Standard or HF)	Standard Model: 28 kg (62 lb) High Frequency: 18 kg (40 lb)
Sensing Elements	Strain gage bridge
Channels	Fx, Fy, Fz, Mx, My, Mz
Top Plate Material	Aluminum or Composite (HF)
Temperature Range	-17 to 52°C (0°F to 125°F)
Analog Output	6 Channels
Digital Output	USB (with <b>OPTIMA amplifier</b> )
Crosstalk*	±0.2% of applied load
Fx, Fy, Fz Hysteresis	±0.2% full scale output
COP Accuracy*	<0.5 mm (0.02 in.)
Measurement Accuracy*	±0.5% of applied load

\*Minimum applied load: 50 lb (BMS400600-4K: 100 lb)



The only force platform systems that conform to the ASTM F3109-16 technological standard for performance verification of multi-axis force plates.



# BMS400600

## Standard Model

AVAILABLE MODELS			
MODEL	BMS400600-1K	BMS400600-2K	BMS400600-4K
Fz Capacity	4450 N (1000 lbs)	8900 N (2000 lbs)	17800 N (4000 lbs)
Fx, Fy Capacity	2225 N	4450 N	8900 N
Mx Capacity	1330 Nm	2670 Nm	5330 Nm
My Capacity	890 Nm	1790 Nm	3570 Nm
Mz Capacity	670 Nm	1330 Nm	2670 Nm
Fx, Fy Sensitivity	0.67 $\mu\text{V}/\text{VN}$	0.34 $\mu\text{V}/\text{VN}$	0.17 $\mu\text{V}/\text{VN}$
Fz Sensitivity	0.17 $\mu\text{V}/\text{VN}$	0.08 $\mu\text{V}/\text{VN}$	0.04 $\mu\text{V}/\text{VN}$
Mx Sensitivity	1.4 $\mu\text{V}/\text{VNm}$	0.70 $\mu\text{V}/\text{VNm}$	0.35 $\mu\text{V}/\text{VNm}$
My Sensitivity	1.78 $\mu\text{V}/\text{VNm}$	0.89 $\mu\text{V}/\text{VNm}$	0.45 $\mu\text{V}/\text{VNm}$
Mz Sensitivity	3.27 $\mu\text{V}/\text{VNm}$	1.63 $\mu\text{V}/\text{VNm}$	0.82 $\mu\text{V}/\text{VNm}$
Fx, Fy Natural Frequency*	310 Hz	370 Hz	450 Hz
Fz Natural Frequency*	370 Hz	380 Hz	410 Hz

\*Natural Frequency specifications shown for Standard Model (Solid Top). HF Model available in 1K or 2K.  
See Specifications & Details on website for complete English Units.



### Heart of the OPTIMA system.

With its advanced features, the OPTIMA (OPT-SC) signal conditioner allows for simple setup, increased accuracy and the option for direct digital integration.



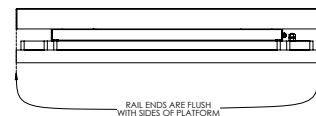
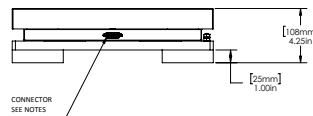
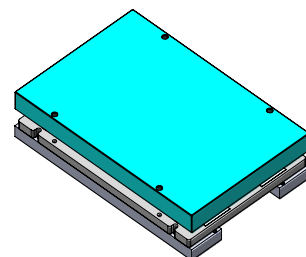
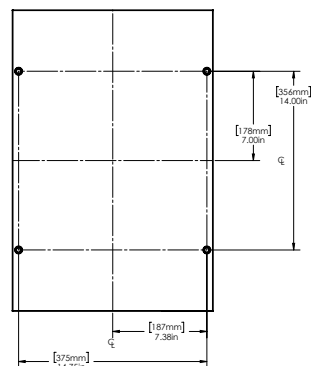
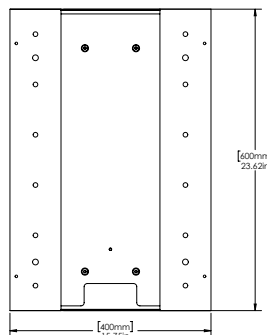
176 Waltham Street, Watertown, MA 02472 USA

+1-617-926-6700 | sales@amtmail.com | www.amti.biz



ISO 9001:2015 certified  
ISO 13485:2016 certified  
ISO 17025:2017 accredited

©2025 Specifications subject to change without notice.  
OPTIMA BMS/HPS SPEC SHEETS Rev 1



# BMS400600HF

## High Frequency Model

AVAILABLE MODELS		
MODEL	BMS400600HF-1K	BMS400600HF-2K
Fz Capacity	4450 N (1000 lbs)	8900 N (2000 lbs)
Fx, Fy Capacity	2225 N	4450 N
Mx Capacity	1330 Nm	2670 Nm
My Capacity	890 Nm	1790 Nm
Mz Capacity	670 Nm	1330 Nm
Fx, Fy Sensitivity	0.67 $\mu\text{V}/\text{VN}$	0.34 $\mu\text{V}/\text{VN}$
Fz Sensitivity	0.17 $\mu\text{V}/\text{VN}$	0.08 $\mu\text{V}/\text{VN}$
Mx Sensitivity	1.4 $\mu\text{V}/\text{VNm}$	0.70 $\mu\text{V}/\text{VNm}$
My Sensitivity	1.78 $\mu\text{V}/\text{VNm}$	0.89 $\mu\text{V}/\text{VNm}$
Mz Sensitivity	3.27 $\mu\text{V}/\text{VNm}$	1.63 $\mu\text{V}/\text{VNm}$
Fx, Fy Natural Frequency*	480 Hz	570 Hz
Fz Natural Frequency*	720 Hz	730 Hz

\*Natural Frequency specifications shown for High Frequency (HF) Model (Composite Top).

See Specifications & Details on website for complete English Units.



### Heart of the OPTIMA system.

With its advanced features, the OPTIMA (OPT-SC) signal conditioner allows for simple setup, increased accuracy and the option for direct digital integration.



176 Waltham Street, Watertown, MA 02472 USA

+1-617-926-6700 | sales@amtmail.com | www.amti.biz



ISO 9001:2015 certified  
ISO 13485:2016 certified  
ISO 17025:2017 accredited

©2025 Specifications subject to change without notice.  
OPTIMA BMS/HPS SPEC SHEETS Rev 1

