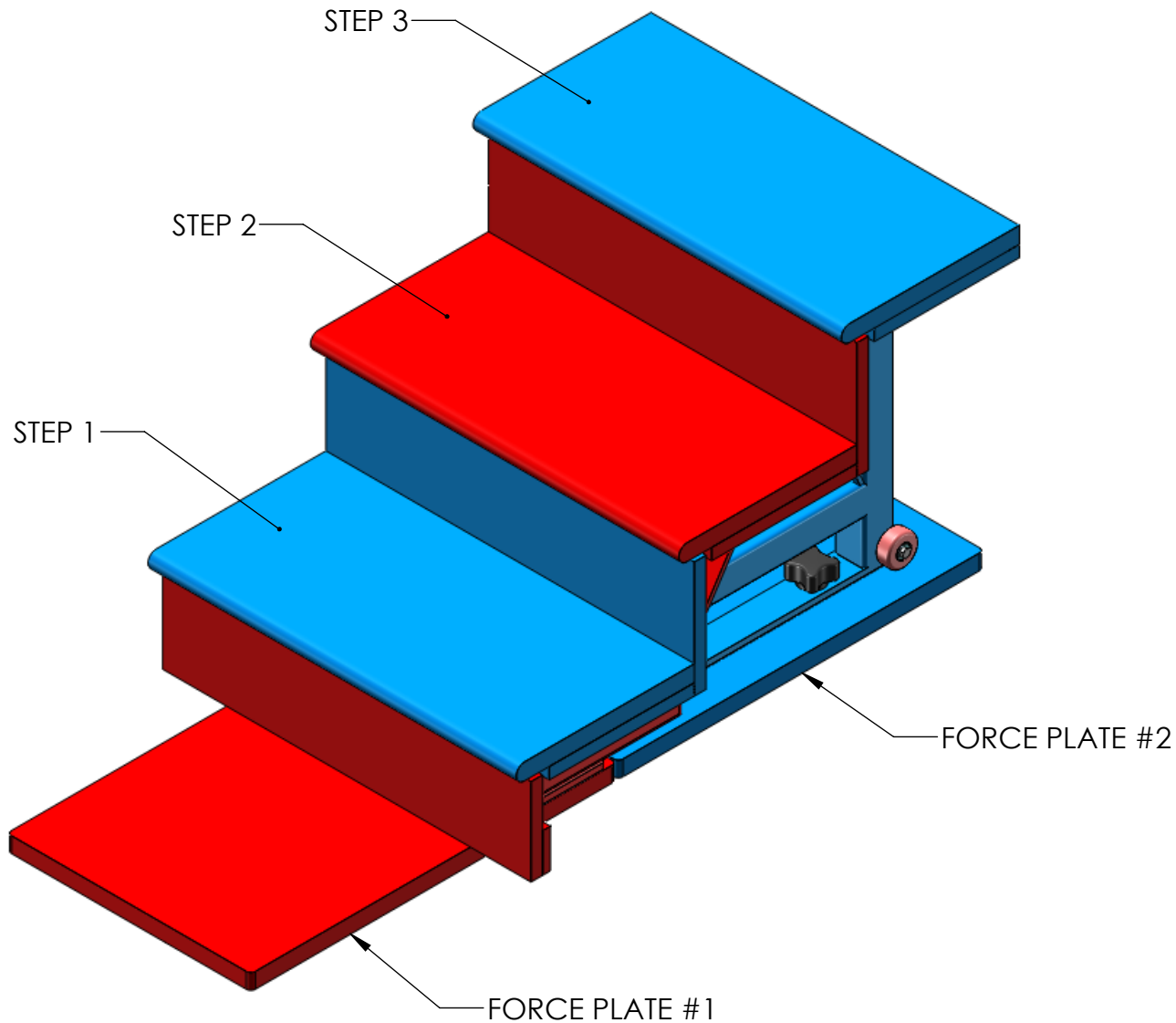


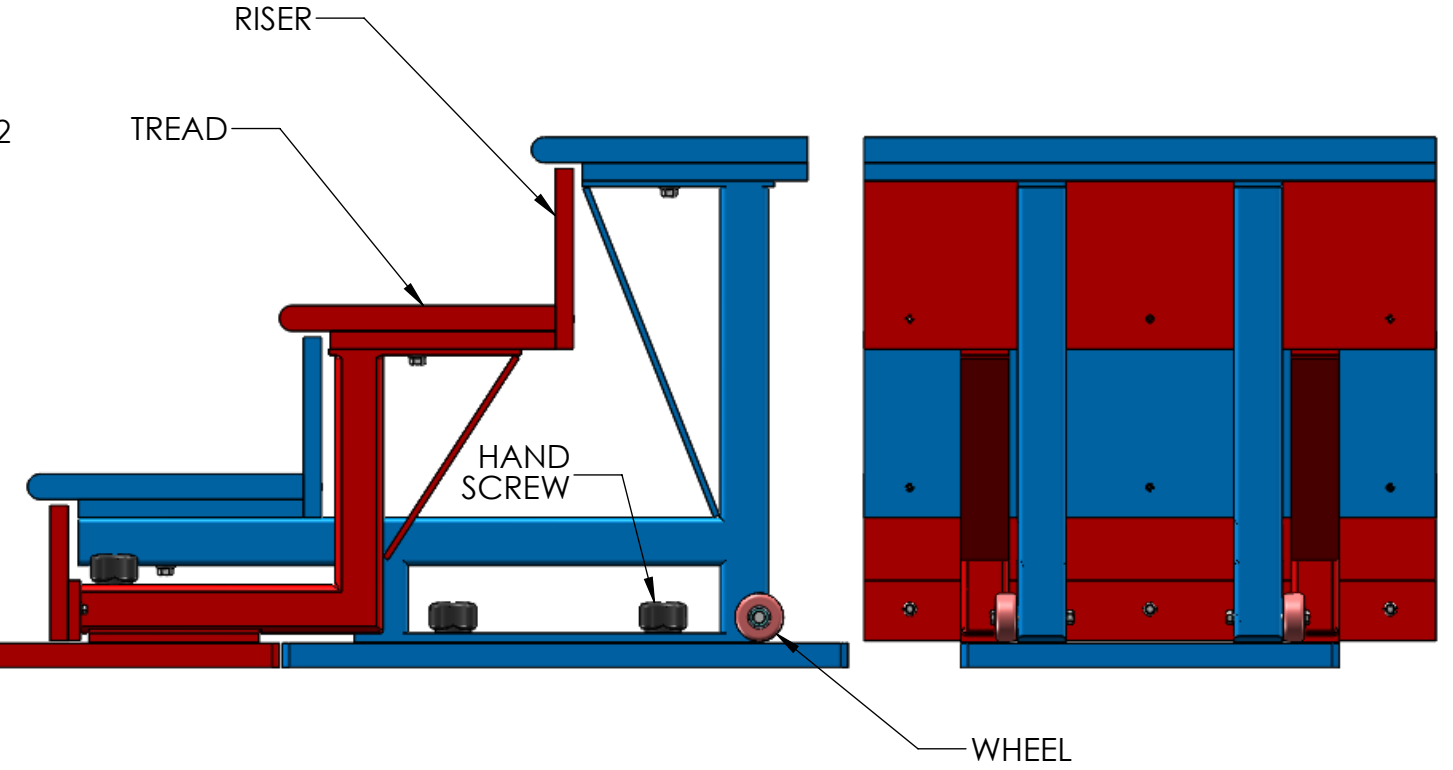
FPSTAIRS

DESCRIPTION
 FPSTAIRS CONSIST OF 2 SEPARATE BUT INTERLACED STAIR STRUCTURES. THEY ARE SHIPPED PRE-ASSEMBLED AND INTERLACED, AND MUST BE MOVED TOGETHER. WHEELS AT THE REAR END OF 2ND STAIR STRUCTURE ARE INTENDED TO AID IN MOVING AND POSITIONING THE STAIRS.

INSTALLATION
 EACH STAIR STRUCTURE IS MOUNTED TO ITS OWN FORCE PLATE. TO COMPLETE FPSTAIRS INSTALLATION POSITION EACH STAIR STRUCTURE SO THAT THE HAND SCREWS ARE OVER THE HOLES IN THE FORCE PLATES AND LIGHTLY TIGHTEN. ALIGN SIDES FACES OF STAIR TREADS AND ADJUST THE POSITION OF THE 2 STRUCTURES SO THAT THE GAPS BETWEEN STAIR RISERS AND ADJACENT STAIR TREADS ARE COMPARABLE. TIGHTEN THE HAND SCREWS.

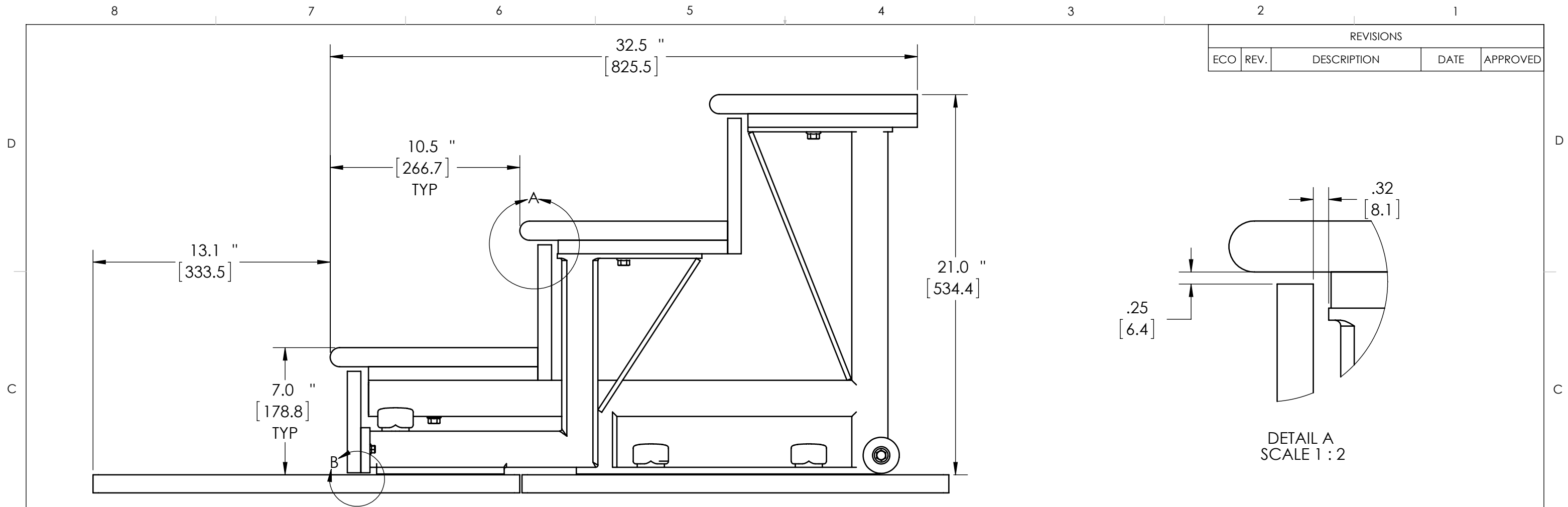


STEP 1 REGISTERS ON FORCE PLATE 2
 STEP 2 REGISTERS ON FORCE PLATE 1
 STEP 3 REGISTERS ON FORCE PLATE 2

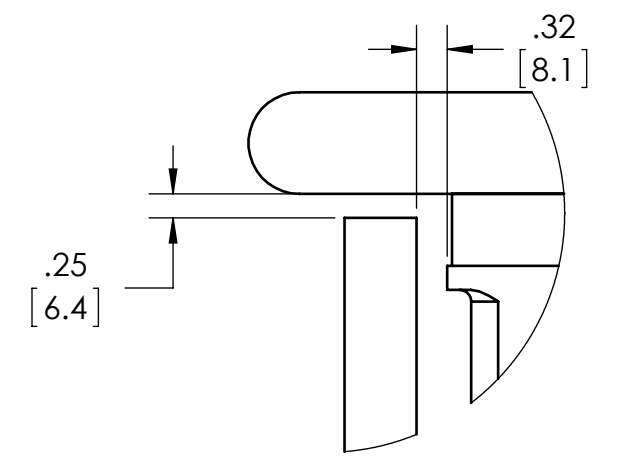


UNLESS OTHERWISE SPECIFIED:		NAME	DATE	AMTI
DIMENSIONS ARE IN INCHES		DRAWN	CLH	
TOLERANCES:		CHECKED		TITLE:
DECIMALS	ANGLES	ENG APPR.	CLH	10/02/13
.X ± .030	±1/2°	MFG APPR.		FPSTAIRS BP400600 ASSEMBLY
.XX ± .015		Q.A.		
.XXX ± .005		COMMENTS:		SIZE
FRACTIONAL ± 1/32				DWG. NO.
INTERPRET GEOMETRIC TOLERANCING PER:				24N-34963
MATERIAL				REV
FINISH				--
DO NOT SCALE DRAWING				SCALE: 3:16
				WEIGHT:
				SHEET 1 OF 2

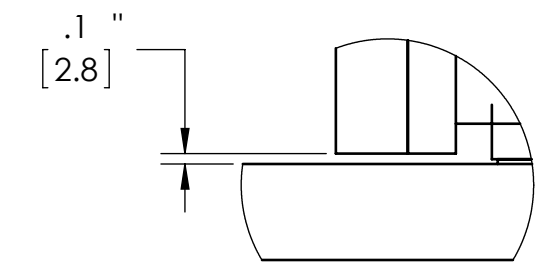
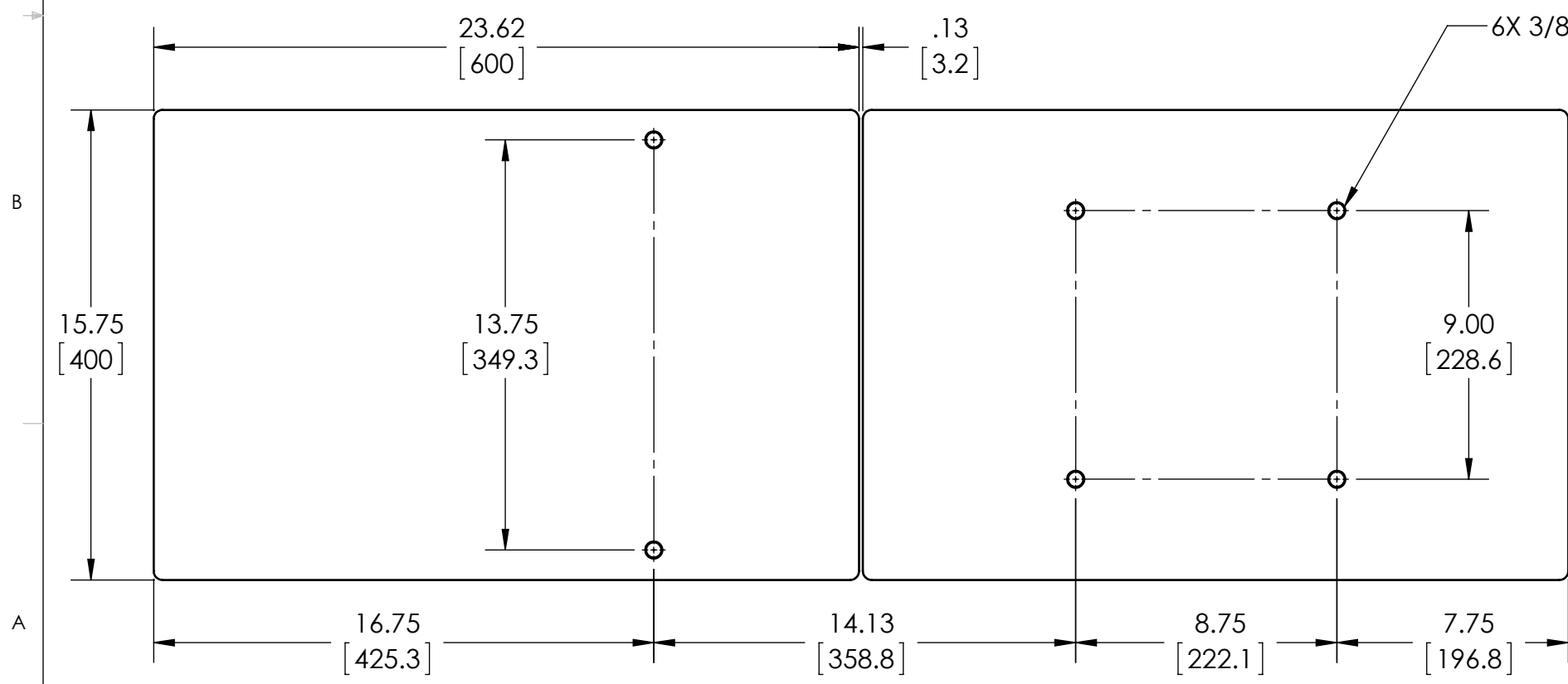
PROPRIETARY AND CONFIDENTIAL
 THE INFORMATION CONTAINED IN THIS DRAWING IS THE SOLE PROPERTY OF AMTI. ANY REPRODUCTION IN PART OR AS A WHOLE WITHOUT THE WRITTEN PERMISSION OF AMTI IS PROHIBITED.



REVISIONS				
ECO	REV.	DESCRIPTION	DATE	APPROVED



DETAIL A
SCALE 1 : 2



DETAIL B
SCALE 1 : 2

UNLESS OTHERWISE SPECIFIED:		NAME	DATE	AMTI
DIMENSIONS ARE IN INCHES		DRAWN	CLH	
TOLERANCES:		CHECKED		TITLE:
DECIMALS	ANGLES	ENG APPR.	CLH	10/02/13
.X ± .030	±1/2°	MFG APPR.		FPSTAIRS
.XX ± .015		Q.A.		BP400600 ASSEMBLY
.XXX ± .005		COMMENTS:		SIZE
FRACTIONAL ± 1/32				DWG. NO.
INTERPRET GEOMETRIC TOLERANCING PER:				24N-34963
MATERIAL	--			REV
FINISH	--			--
DO NOT SCALE DRAWING				SCALE: 3:16
				WEIGHT:
				SHEET 2 OF 2

PROPRIETARY AND CONFIDENTIAL
THE INFORMATION CONTAINED IN THIS DRAWING IS THE SOLE PROPERTY OF AMTI. ANY REPRODUCTION IN PART OR AS A WHOLE WITHOUT THE WRITTEN PERMISSION OF AMTI IS PROHIBITED.