

4

3

2

1

PART	DESCRIPTION
1	RAIL
2	TIE ASSEMBLY
3	JOINT BAR ASSEMBLY
4	INSTALLATION STANDOFF ASSEMBLY
5	5/8-18 JACKING SCREW

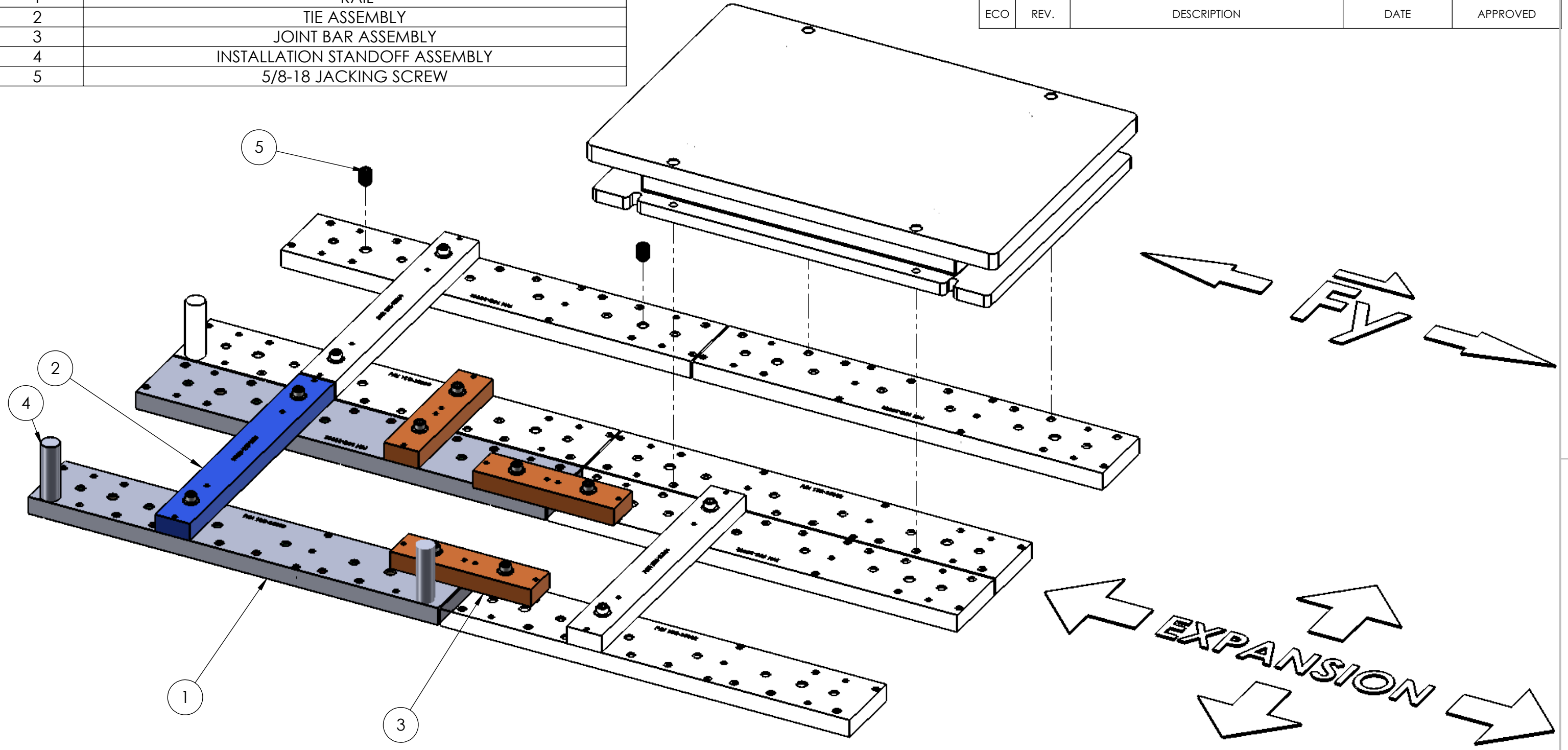
REVISIONS				
ECO	REV.	DESCRIPTION	DATE	APPROVED

B

B

A

A



NOTE: THIS ASSEMBLY CONFIGURATION APPLIES TO THE FOLLOWING PLATFORM MODELS:
 OR6-6-OP, OR6-GT, OR6-WP-OP, OR6-7-OP, OPT464508, OPT464508HF, OPT400600,
 OPT400600HF, BP400600-OP, BP400600HF-OP, BP400600WP-OP, BP600900, BP6001200

PROPRIETARY AND CONFIDENTIAL
 THE INFORMATION CONTAINED IN THIS DRAWING IS THE SOLE PROPERTY OF <INSERT COMPANY NAME HERE>. ANY REPRODUCTION IN PART OR AS A WHOLE WITHOUT THE WRITTEN PERMISSION OF <INSERT COMPANY NAME HERE> IS PROHIBITED.

UNLESS OTHERWISE SPECIFIED:		NAME	DATE
DIMENSIONS ARE IN INCHES		DRAWN	GR
TOLERANCES:		CHECKED	
FRACTIONAL ±		ENG APPR.	JTB
ANGULAR: MACH ± BEND ±		MFG APPR.	
TWO PLACE DECIMAL ±		Q.A.	
THREE PLACE DECIMAL ±		COMMENTS:	
INTERPRET GEOMETRIC TOLERANCING PER:		TITLE:	
MATERIAL		MRS ASSEMBLY FOR RECTANGULAR PLATFORMS	
FINISH		SIZE	DWG. NO.
NEXT ASSY		B	15G-36102
USED ON		REV	--
APPLICATION		SCALE: 1:5	WEIGHT:
DO NOT SCALE DRAWING		SHEET 1 OF 1	

4

3

2

1