

Quick Start Guide (ACS-O/ACG-O)

Step 1: Locate the AMTI USB drive. It contains manuals and software for your force transducer.

Step 2: Locate the USB cable and connect it from the force plate to your computer's usb port. (page 2 of this guide)

Step 3: Install the OPTIMA drivers found in the folder '*Optima-Gen5 Drivers*' using the instructions on page 2 of this guide.

Step 4: Install Netforce by opening the NetForce folder and double clicking setup.exe.

Step 5: Open Netforce and run through the setup helper to configure the force plate - instructions on Page 4 of this guide.

Step 6: View the real-time stream in NetForce to ensure you are properly connected. Instructions can be found on page 6 of this document. If you are unable to connect consult the product manuals.

Congratulations your Force Plate is now installed!

**You can now collect data through NetForce
Digital integration is also possible with a number of third party applications
including 3D motion capture systems**

**For more detailed information consult our full-length manuals or AMTI support
at helpdesk@amtmail.com.**

1. USB Flash Drive

This drive contains all necessary manuals, along with required software (Netforce, drivers, and other purchased software). Also contained is a backup of the force plate's calibration information which will automatically load from the force plate during the installation process.

2. Force plate setup



Force Plate (or transducer)



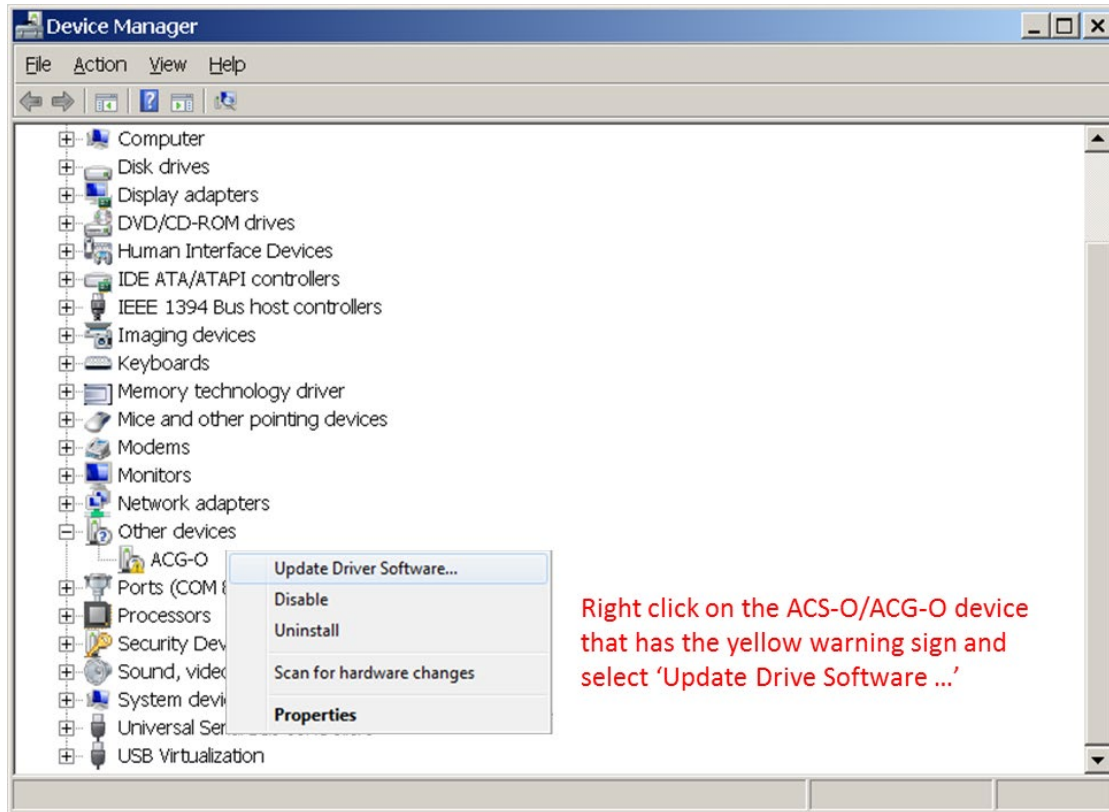
USB cable

- a. Connect the USB cable from the force plate to a USB port on your computer.
- b. For more than one plate, plug each into a powered USB hub, then plug the hub into your computer.

3. Driver Installation

These are instructions for driver installation on a Windows 7 computer.

- a. Make sure the amplifier and force transducer are connected and the amplifier is powered on.
- b. In the control panel search for the the **'Device Manager'** and click on it.
- c. Locate the ACS-O/ACG-O device. It will likely be listed under **'Other devices'** and have a yellow warning on its logo.
- d. Right click the ACG-O/ACS-O device and select **'Update Driver Software ...'**(see image below)
- e. Select **'Browse my computer for driver software'**.
- f. Click **'Browse'** and navigate to the folder containing the driver files. Make sure to select the appropriate 32-bit or 64-bit version for your operating system and then click **'OK'**.
 - i. To determine which operating system you have click **'Computer'** under the Windows **'Start'** menu, then right click and select **'Properties'**.
- g. Click **'OK'** and then click **'Next'**
- h. You should receive a message indicating that the drivers have been successfully installed.



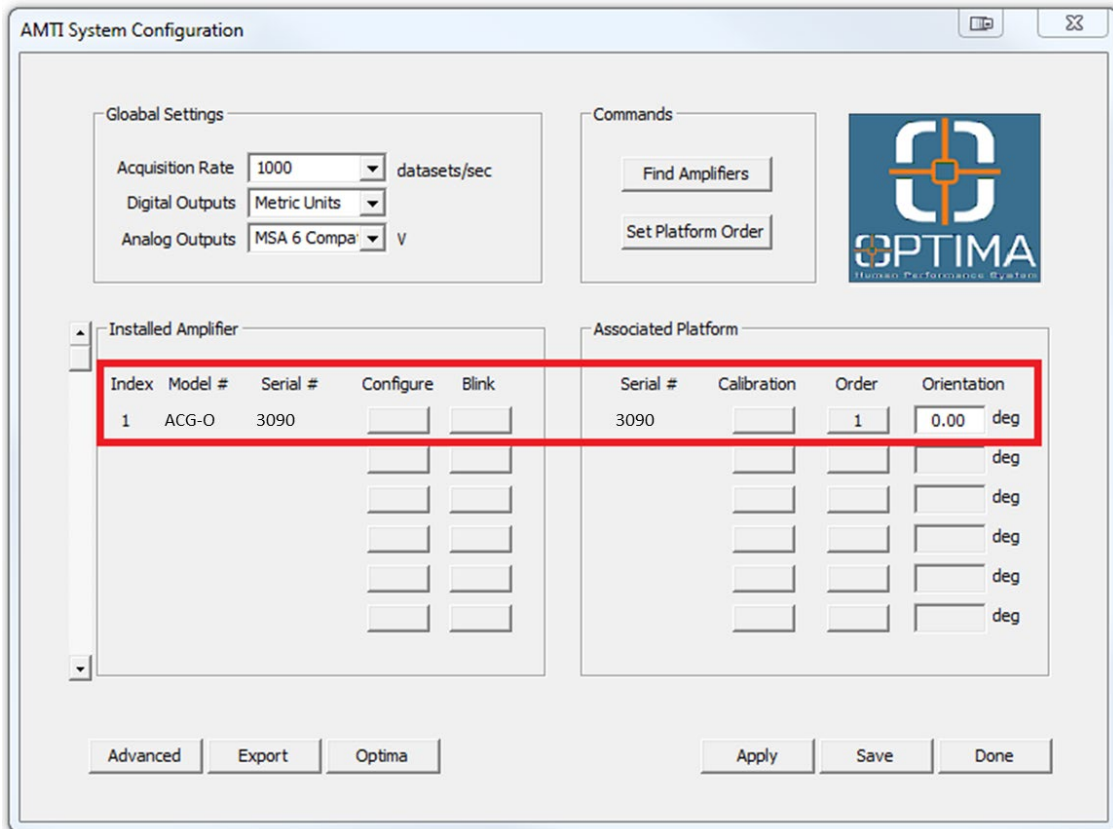
4. NetForce Installation

Even if you plan to integrate your force transducer with a third party system such as a motion capture system you must install NetForce. NetForce will allow you to perform the initial configuration of your ACG-O/ACS-O amplifier so that it will be recognized by other systems.

Double click the **Setup.exe** to install the software. Click through the installation wizard. If you receive a warning regarding a newer version of C++ simply close this window and continue on to opening NetForce. If NetForce will not open you may need to install an older version of C++.

5. NetForce Setup

- a. The first time you open NetForce it will automatically take you through an initial setup. If this does not open automatically access it by clicking '**Setup**', then '**Setup Helper**', and '**Yes**'.
- b. The first window will ask if you wish to continue with the setup, click '**Yes**'
- c. Next select the configuration that matches your hardware, in this case highlight '**ACS-O \ ACG-O**' and click '**OK**'
- d. The '**AMTI System Configuration**' window will open. It should auto-populate the list of '**Installed Amplifier**' and '**Associated Platform**' with your amplifier model and serial number as well as the force plate's serial number (see figure below).
 - If the lists do not automatically populate check your connections and click '**Find Amplifiers**'. The drivers need to be installed for this to work (see **Step 3**).



- e. In the future you can access the **'AMTI System Configuration'** window by clicking **'Setup'**, then **'Hardware Installation'**, then **'Modify'**
- f. Once the force plate is listed on this page click **'Apply'** and then be sure to click **'Save'**. Then click **'Done'**
- g. In the next window select the location where data collected through NetForce should be saved. Navigate to an appropriate folder or select the folder **'Data'** under **'AMTINetForce'** and click **'Open'**, then **'Open'**.
- h. Click **'OK'** for the location of the default directory.
- i. Click **'OK'** to complete the setup and close the program.

6. View the Real-time Data Stream

- a. Open NetForce (your force plate should already be installed from **Step 5**)
- b. At the bottom left of each graph set the **'Amp ID'** to the force plate number for which you wish to view the data (This should be 1 or greater; no data will appear if it is set to 0).
- c. Under the **'Startup'** menu select **'Hardware Zero'**.
- d. Under the **'Settings'** menu select **'Acquisition Settings'** and ensure that the **'Mode'** at the bottom right of the window is set to **'Recurring'**
- e. At the bottom right of the graph window the **'Units'** or **'Setup'** button will allow you to set the units, line color and scaling on the graph.
- f. You can adjust which channels are displayed by toggling the channel buttons to the left of the graph window on or off.
- g. Adjust the channel's zero position by dragging the triangle to the left of the y-axis up and down.
- h. Click the **'Center'** then **'Space'** button in the bottom right of each graph window to ensure all displayed channels are visible in the window.
- i. Click **'Start'** at the bottom right of the graph window and the data will begin to stream.
- j. For more details on the features available through NetForce refer to the **NetForce User Manual**.