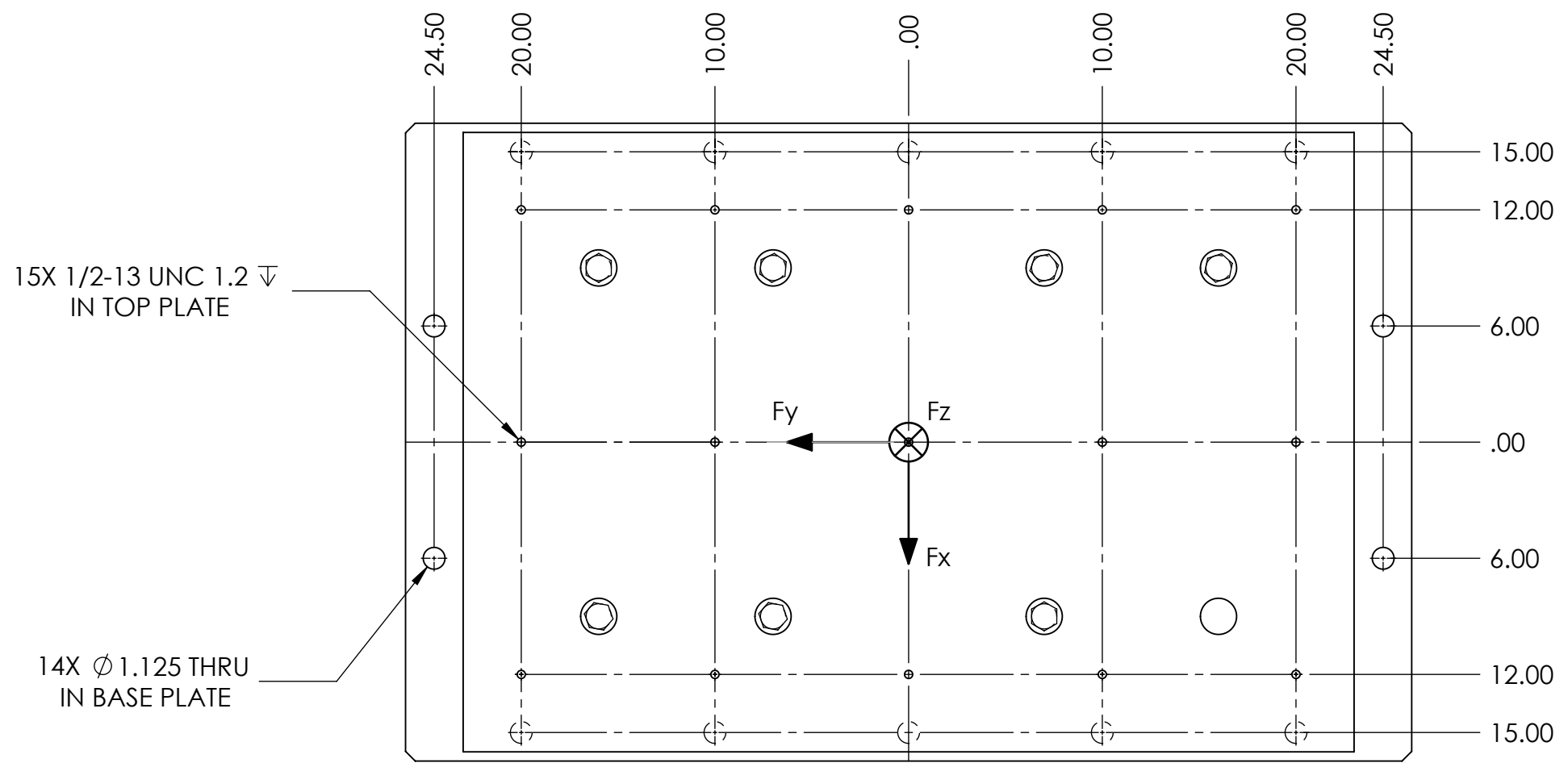


8 7 6 5 4 3 2 1

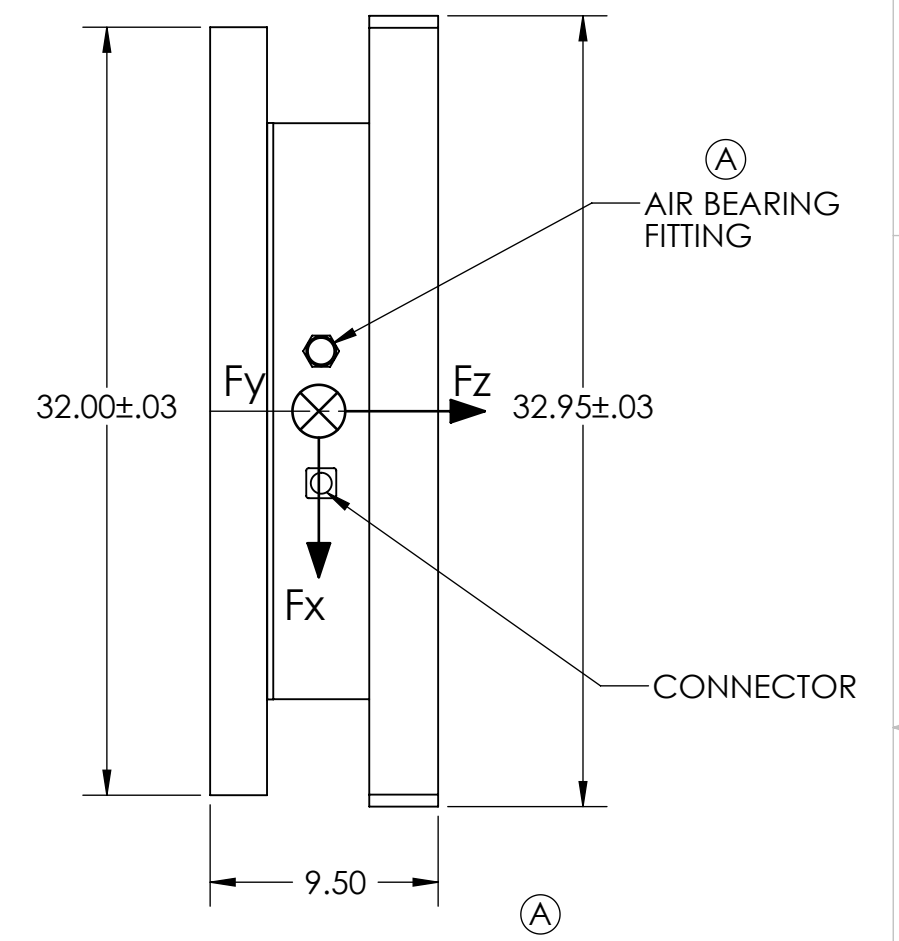
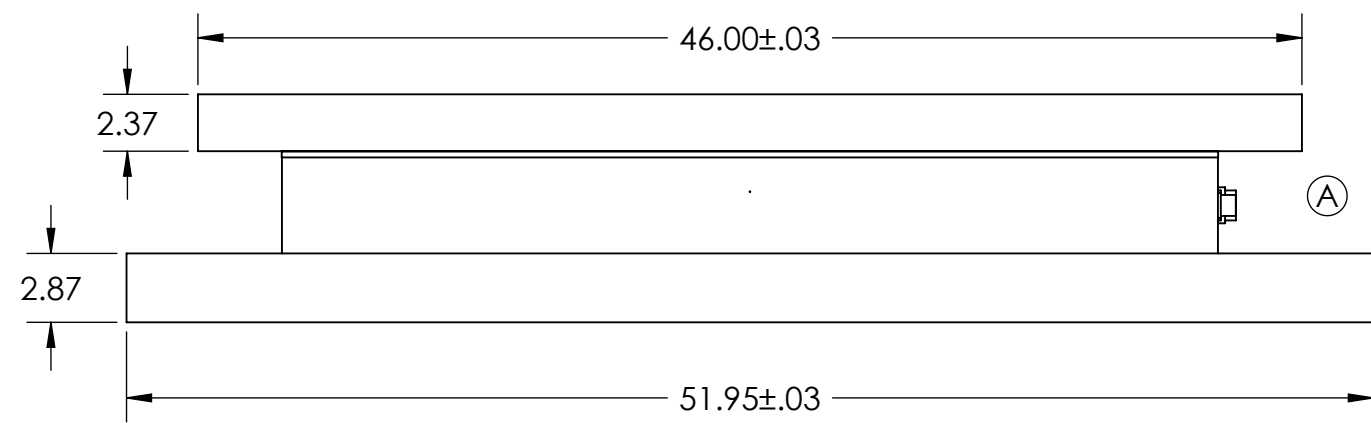
REVISIONS				
ECO	REV.	DESCRIPTION	DATE	APPROVED
10232	A	REVISED DRAWING ARRANGEMENT. ADDED NOTE.	8/10/2011	CLH

D
C
B
A



15X 1/2-13 UNC 1.2 ∇
IN TOP PLATE

14X ϕ 1.125 THRU
IN BASE PLATE



DRAWING IS SUBJECT TO CHANGE WITHOUT NOTICE.

PROPRIETARY AND CONFIDENTIAL
THE INFORMATION CONTAINED IN THIS DRAWING IS THE SOLE PROPERTY OF AMTI. ANY REPRODUCTION IN PART OR AS A WHOLE WITHOUT THE WRITTEN PERMISSION OF AMTI IS PROHIBITED.

UNLESS OTHERWISE SPECIFIED:		NAME	DATE	AMTI
DIMENSIONS ARE IN INCHES		DRAWN	CLH 11/16/07	
TOLERANCES:		CHECKED		
FRACTIONAL \pm 1/32		ENG APPR.	FJC 11/16/07	
ANGULAR: MACH \pm .25 BEND \pm .5		MFG APPR.		
TWO PLACE DECIMAL \pm .015		Q.A.		
THREE PLACE DECIMAL \pm .005		COMMENTS:		
INTERPRET GEOMETRIC TOLERANCING PER:				TITLE:
MATERIAL				MC3246
FINISH				LANDING GEAR SENSOR
NEXT ASSY	USED ON			SIZE B
APPLICATION				DWG. NO. 21M-B-30183
DO NOT SCALE DRAWING				REV A
				SCALE: 1:8 WEIGHT: 1 OF 1

8 7 6 5 4 3 2 1